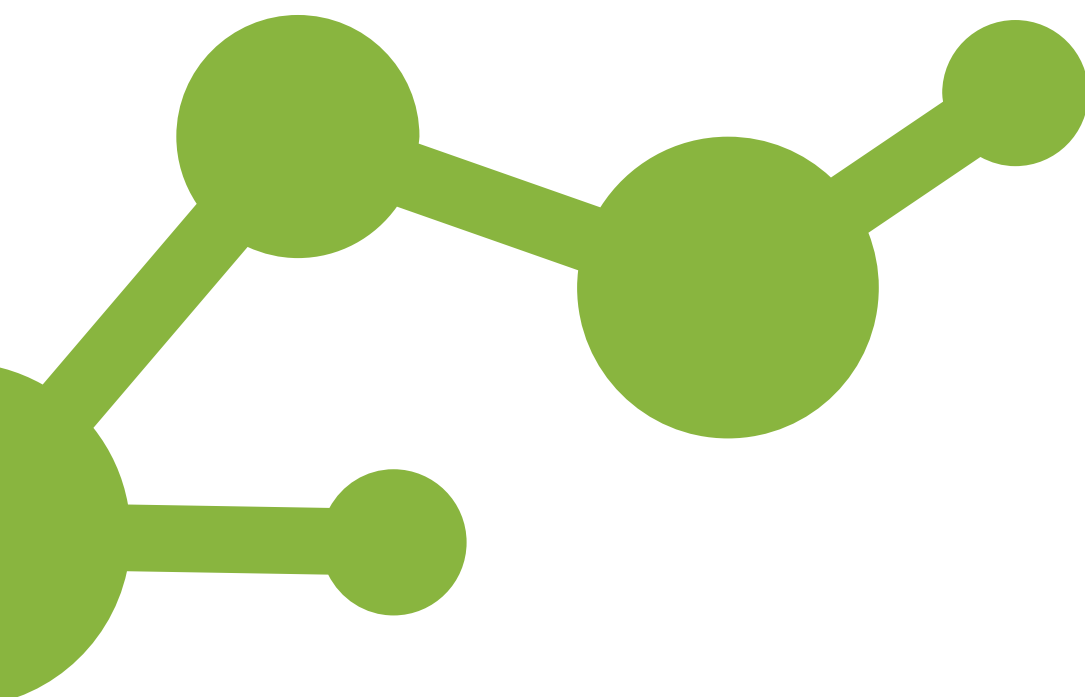




COMBINED PRODUCT DISCLOSURE STATEMENT
AND FINANCIAL SERVICES GUIDE

Motorcycle Insurance - D/B Direct



Contents

Part A: Product Disclosure Statement

Introduction	1
Your Product Disclosure Statement (PDS)	1
Eric Insurance	1
Our agreement with you	1
Our representatives and distributors	1
How to apply	1
Summary of cover	2
Fire, Theft, & Third Party Property Damage cover	2
Legal Liability	2
Legal Costs	2
Included benefits - Fire, Theft, & Third Party Property Damage cover	2
Comprehensive cover	2
Comprehensive cover benefits	3
Emergency travel / accommodation	3
Essential repairs	3
Funeral expenses	3
Hire vehicle following theft	3
Keys and locks	3
Motorcycle apparel	3
Replacement of a new motorcycle	3
Trailer cover	3
Transfer Motorcycle cover	3
Transit cover	3
Towing	3
What you are not insured for	3
Being used for hire	3
Business pool Motorcycles	4
Consequential loss	4
Couriers / security patrols	4
Riding under the influence of drugs alcohol or refusing a test	4
Failure to secure the Motorcycle	4
For sale	4
Funeral expenses	4
Illegal purpose	4
Incorrect fuel usage	4
Intentional loss or damage	4
Leaving the scene of an accident	4
Modifications and accessories	4
Motor trade use	4
Nuclear waste / material	4
Old damage	4
Operating lease Motorcycles	4
Overloaded Motorcycle / hazardous goods	4
Penalties and fines	4
Reckless acts	4
Seizure of Motorcycle	4
Specific exclusions to third party liability cover	4
Storage costs	4
Territory limits	5
Terrorism	5
Tests and events use	5

What you are not insured for (cont.)

Theft	5
Trailer contents	5
Tyres	5
Unauthorised repairs	5
Undisclosed riders	5
Unintended use	5
Unlicensed riders	5
Unregistered Motorcycles	5
Unroadworthy condition	5
War	5
Wear, tear and failure	5
How to make a claim	5
In the event of an accident	5
Following theft or malicious damage	5
Lodging your claim	5
Who repairs the Motorcycle?	5
Total Loss claim	6
What you pay in the event of a claim	6
Premium	6
Excess	6
Contribution	6
Excess	6
Basic Excess	6
Inexperienced Rider Excess	6
Imposed Excess	6
International Licence Holder Excess	6
Unlisted Rider Excess	6
Theft Excess	6
Paying your Excess	6
Determining what we pay and our rights	6
Maximum payment	6
Subrogation rights	7
Claim recovery	7
Replacement parts	7
The cost of your insurance cover	7
Pay your premium by instalments	7
Overdue instalments	7
Cooling off period	7
We rely on the information you provide us	7
How we protect your personal information	7
Code of Practice	8
Cancellation	8
Cancellation by you	8
Cancellation by us	8
Upon cancellation	8
Termination	8
Dispute resolution	8
Financial Claims Scheme	8
GST	8
What do we mean by that?	9

Part B: Financial Services Guide



Part A:

Product Disclosure Statement

INTRODUCTION

Please take the time to read through this document carefully and keep it in a safe place as it contains important information required under the Corporations Act 2001 including information about the extent of your insurance cover and any limitations.

If you have any questions about this document or your insurance cover, please contact us and we will be happy to explain any matter for you. We will contact you at least annually during the Period of Insurance.

Preparation date 1st June 2020. VDDMCI010620

YOUR PRODUCT DISCLOSURE STATEMENT (PDS)?

This PDS sets out the terms and conditions of your insurance cover. Please read it so that you can make an informed choice about your insurance needs.

The information in this PDS was current at the time of its preparation. If there is a significant change to the information, we will make available to you a replacement or Supplementary PDS. If you wish to obtain confirmation of the current terms and conditions of your insurance, please contact us and we will provide them free of charge.

Some words or expressions have special meaning and may begin with capital letters. Their meanings are explained under the heading "What do we mean by that?" in this PDS.

ERIC INSURANCE

Eric Insurance Limited ABN 18 009 129 793 Australian Financial Services Licence (AFSL) 238 279 (Eric), is the issuer and underwriter of this insurance product.

If you need to contact us you can do so through any of the options below:

Address: PO Box 9106, Scoresby VIC 3179
Telephone: 1800 999 977
Web: www.ericinsurance.com.au
Email: info@ericinsurance.com.au

We communicate with you in various forms including but not limited to letters, emails and SMS.

OUR AGREEMENT WITH YOU

Upon payment of the Premium, our agreement with you is made up of:

- This combined PDS and Financial Services Guide (FSG);
- The Policy Schedule which shows the details relevant to your insurance cover; and
- Any Endorsement or Supplementary PDS which we may send to you.

OUR REPRESENTATIVES AND DISTRIBUTORS

Eric has relationships with authorised representatives, distributors and other licensees who may arrange insurance on our behalf, and if so, may receive remuneration. For more information, please refer to the FSG (Part B of this document).

HOW TO APPLY

To apply for this insurance, you will need to complete our online application.

Your answers to the questions we ask are used to evaluate your application. Refer to section under the heading "We rely on the information you provide us".

Once your application has been assessed in accordance with our underwriting acceptance criteria and if insurance cover is accepted, we will provide you with a Policy Schedule confirming the terms and conditions specific to your cover.



SUMMARY OF COVER

There are two cover options available under this insurance – Comprehensive, and Fire, Theft & Third Party Property Damage. The cover option you choose will be shown on the Policy Schedule.

The benefits provided by this insurance during the Period of Insurance are shown in the following table and are subject to the terms, conditions and exclusions set out in this PDS. Please refer to the relevant sections of this PDS for more information.

Benefits	Cover Limit	COMP	FT & TPPD
Emergency Travel or Accommodation	\$500 - 100km or more from your stated residential address.	✓	✗
Essential Repairs	\$300	✓	✗
Funeral Expenses	\$2,000	✓	✗
Hire vehicle following Theft	\$500	✓	✓
Keys and Locks	\$750	✓	✗
Motorcycle Apparel	\$1,000 per item \$4,000 total	✓	✗
Replacement Motorcycle	Where the Motorcycle has travelled up to 15,000km in first year, or up to 25,000km in second year	✓	✗
Towing	Reasonable costs	✓	✓
Trailer	\$1,000	✓	✗
Transfer Motorcycle Cover	Limited to a value we determine and agreed to by you as reasonable for the new motorcycle	✓	✗
Transit Cover	Unlimited	✓	✗

Insurance cover is not available to all Motorcycles or in all circumstances. You should carefully read the section titled "What you are not insured for" for further information.

FIRE, THEFT, & THIRD PARTY PROPERTY DAMAGE COVER

If you have Fire, Theft, & Third Party Property Damage Cover and your Motorcycle is damaged by fire or is stolen, then subject to the terms and conditions of our agreement with you, at our option we will pay up to \$5,000 to:

- Repair, reinstate or replace your Motorcycle;
- Pay you the cost of repairing your Motorcycle; or
- Indemnify you up to the Amount Covered as shown on the Policy Schedule.

The following benefits are available for Third Party Property Damage Cover, subject to the terms and conditions of our agreement with you:

LEGAL LIABILITY

We will cover you for accidental damage to someone else's property as a consequence of the use of your Motorcycle, for which you would otherwise have Legal Liability.

This includes accidental damage to someone else's property occurring in connection with a trailer while attached to your Motorcycle, or as a consequence of any item falling from the trailer.

The maximum amount we will pay in total for all claims arising out of any one Legal Liability event is \$20 million.

LEGAL COSTS

We will pay the costs of defending any legal proceedings commenced against you as a consequence of events covered by Third Party Property Damage Cover. We will only cover these costs where they have been incurred after our acceptance of your claim.

INCLUDED BENEFITS - FIRE, THEFT, & THIRD PARTY PROPERTY DAMAGE

Available if you have chosen Fire, Theft & Third Party Property Damage Cover

If we accept a claim under Fire, Theft, & Third Party Property Damage Cover, the following benefits may be available:

HIRE VEHICLE FOLLOWING THEFT and TOWING COSTS

Please refer to the relevant sections under "Comprehensive Cover Benefits" for more information on each of these additional benefits.

COMPREHENSIVE COVER

Includes cover provided by Fire, Theft, & Third Party Property Damage Cover

If you have Comprehensive Cover and your Motorcycle is damaged in an accident, fire, theft, storm, flood or malicious act, then subject to the terms and conditions of our agreement with you, at our option we will:

- Repair, reinstate or replace your Motorcycle;
- Pay you the cost of repairing your Motorcycle; or
- Indemnify you up to the Amount Covered as shown on the Policy Schedule.

COMPREHENSIVE COVER BENEFITS

Available if you have chosen Comprehensive Cover

In the event we accept your claim under Comprehensive Cover, the following additional benefits may be provided:

EMERGENCY TRAVEL / ACCOMMODATION

We will pay up to \$500 for emergency travel and/or overnight accommodation in the event the Motorcycle is not able to be restored to a roadworthy and safe condition by Essential Repairs following an event covered by this insurance. This benefit will only apply where the event occurs over 100km from your stated residential address.

ESSENTIAL REPAIRS

If your Motorcycle is damaged as a result of an event covered by this insurance, we will pay up to a maximum of \$300 for the cost of essential repairs to restore it to a roadworthy and safe condition in order that it may be ridden on to the intended destination or to your place of residence or employment.

FUNERAL EXPENSES

We will pay for funeral expenses incurred following the death of the rider of your Motorcycle (as certified by a licensed medical practitioner) as a direct result of injuries caused in an accident while riding the Motorcycle. The accident resulting in the injury needs to have occurred during the Period of Insurance. The maximum benefit is \$2,000 for any one event less any amount payable by any accident compensation authority. Invoices / receipts must be provided. We will not pay a claim under this benefit if the death of the rider was as a consequence of intentional self-harm or suicide.

HIRE VEHICLE FOLLOWING THEFT

If your Motorcycle is stolen we will reimburse you up to the benefit limit of \$500 for the reasonable cost of hiring a similar type of motorcycle (excluding running costs, insurance or other costs that you may be liable for under the hire car or rental agreement).

We will pay this benefit until your Motorcycle has been found and repaired, or we have replaced or indemnified you under this insurance, whichever is the earlier.

KEYS AND LOCKS

If the Motorcycle keys are lost or stolen, we will pay for the replacement keys and recoding of locks up to a benefit limit of \$750. Your Basic Excess will apply. If your keys have been stolen, you must report the theft to the Police.

MOTORCYCLE APPAREL

When loss or damage occurs to your Motorcycle and is covered by this insurance, if loss or damage occurs to your Motorcycle Apparel, at our option we will:

- Replace the item if it is less than 2 years old, or;
- Reimburse you the current market value for items that are more than 2 years old and less than 10 years old.

When your Motorcycle Apparel is more than 2 years old we will apply straight line depreciation at the rate of 10% per annum.

For motorcycle helmets, we pay for a replacement helmet of the same make and model if available, otherwise we will reimburse you the reasonable cost for a replacement helmet.

Cover is limited to a total maximum benefit of \$4,000 in any one incident with an individual item limit of \$1,000. (Please refer to the "What do we mean by that" section for further details on covered items).

REPLACEMENT OF A NEW MOTORCYCLE

If your Motorcycle becomes a Total Loss within 24 months of the date of first registration, we will replace your Motorcycle with another motorcycle of the same make, model and series, subject to the following conditions:

- You must have comprehensively insured the Motorcycle with us from the date of first registration;
- The replacement motorcycle must be locally available within 3 months of your Motorcycle being declared a Total Loss, and if a replacement motorcycle is not available, we will, at our option, pay the Amount Covered as stated in the Policy Schedule;
- Modifications and Non-Standard Accessories will be limited to the amount nominated by you and listed on the Policy Schedule as the Modifications and Non-Standard Accessories Value;
- If your Motorcycle is under finance, you must supply your Financier's written consent to have the Motorcycle replaced under the current contract; and
- The Motorcycle should not have covered more than 15,000km in the first year following its original registration and no more than 25,000km in the second year following its original registration.

If we replace your Motorcycle, we will pay the Stamp Duty on the replacement motorcycle.

TRAILER COVER (single axle trailers only)

We will pay up to \$1,000 if your single axle trailer is accidentally damaged and/or stolen while it is attached to your Motorcycle. The contents and fixtures of your trailer are not covered under this insurance.

TRANSFER MOTORCYCLE COVER

We will transfer this insurance if you sell the Motorcycle and replace it with another motorcycle, provided;

- The new motorcycle meets our underwriting criteria;
- You advise us of the new Motorcycle details within 14 days of its purchase; and
- You pay to us any additional Premium as advised by us.

The Amount Covered will be adjusted to a value we determine and agreed by you as a reasonable amount for your new motorcycle.

TRANSIT COVER

We will pay for loss of or damage to your Motorcycle while being transported during the Period of Insurance between any places in Australia, including when your Motorcycle is being loaded or unloaded. We will also pay your contribution for general average and shipping charges where maritime conditions apply.

TOWING

If your Motorcycle is damaged as a result of an event covered by this insurance, we will pay the reasonable cost depending upon the circumstances of your claim for:

- Removal of your Motorcycle (excluding storage costs unless authorised by us) to the nearest repairer or place of safety; or
- Returning your Motorcycle to you after it has been recovered following a theft.

WHAT YOU ARE NOT INSURED FOR

We will not pay any claim under this insurance for any of the following:

BEING USED FOR HIRE

Motorcycles used for hire, rental or carrying passengers for reward, including rental Motorcycles and Motorcycles used for paid riding lessons.

BUSINESS POOL MOTORCYCLES

If the Motorcycle is owned or leased by an entity other than a natural person, that is being used for business purposes by multiple riders.

CONSEQUENTIAL LOSS

Unless expressly included by this insurance, we do not provide cover for all or any consequential financial or non-financial loss or damage incurred as a consequence of the incident giving rise to a claim.

COURIERS / SECURITY PATROLS

Motorcycles used for delivery or courier use, or security patrols, including but not limited to fast food delivery, towing advertising billboards or transportation of medical goods.

RIDING UNDER THE INFLUENCE OF DRUGS / ALCOHOL OR REFUSING A TEST

You or any rider of your Motorcycle incurs loss, damage or Legal Liability whilst:

- Riding under the influence of alcohol or drugs of any kind; or
- You are convicted of or issued with an infringement notice, as a consequence of an accident, for:
 - Riding under the influence of alcohol and/or drugs; or
 - Riding whilst the percentage of alcohol in your blood exceeds that permitted by the law of any State or Territory; or
 - Refusing to submit to or cooperate with testing or analysis required by the law of any State or Territory for the purpose of ascertaining the presence of alcohol and/or drugs in your body.

FAILURE TO SECURE THE MOTORCYCLE

Damage, loss or Legal Liability which occurs as a consequence of leaving your Motorcycle unattended and unlocked in a public place.

You must always act reasonably to ensure the Motorcycle is securely locked whenever it is unoccupied. This includes not leaving your keys in or on the Motorcycle whilst it is unattended.

We will not cover loss or further damage to the Motorcycle following a loss or accident, unless all reasonable steps were taken to protect the Motorcycle following the initial loss or accident.

FOR SALE

The Motorcycle is in the possession of a licensed motorcycle trader for the purpose of selling the Motorcycle at the time of the event giving rise to the claim.

We will not cover loss or damage to the Motorcycle where you fail to acquire the full details of anyone test riding the Motorcycle as part of you selling the Motorcycle privately.

FUNERAL EXPENSES

Funeral expenses incurred if the death of the rider was a consequence of intentional self-harm or suicide.

ILLEGAL PURPOSE

The Motorcycle is used for illegal or unlawful purposes by you or by any person with your Express or Implied Consent.

INCORRECT FUEL USAGE

Loss or damage to the Motorcycle (including damage to the engine and/or fuel system) caused by the incorrect type or grade of fuel being used.

INTENTIONAL LOSS OR DAMAGE

Intentional loss or damage caused by you, or someone you allow to use the Motorcycle, or someone otherwise acting with your Express or Implied Consent.

LEAVING THE SCENE OF AN ACCIDENT

Where you fail to comply with any obligations at law following an event that results in a claim, including where required failing to report an accident to Police or to remain at the scene of an accident long enough to enable the exchange of details or the attendance of interested parties.

MODIFICATIONS AND ACCESSORIES

Loss or damage if the Motorcycle was fitted with any illegal Modifications or accessories.

MOTOR TRADE USE

Loss or damage caused whilst the Motorcycle is in the control or custody of any party for the purposes of commercial servicing or repairing the Motorcycle, unless the Motorcycle was being repaired as authorised by us following our acceptance of a claim.

NUCLEAR WASTE / MATERIAL

Loss or damage caused by the use, existence or escape of any nuclear fuel, nuclear material or waste.

OLD DAMAGE

The cost of repairs to pre-existing damage to your Motorcycle or repairing faulty workmanship or incomplete repairs to the Motorcycle which were carried out prior to a loss or accident resulting in a claim under this insurance.

OPERATING LEASE MOTORCYCLES

If the Motorcycle is subject to a contract wherein the owner (Lessor) allows the user (Lessee) to use the Motorcycle for a set period in exchange for financial compensation, and where the Lessor maintains ownership of the Motorcycle throughout the operating lease.

OVERLOADED MOTORCYCLE / HAZARDOUS GOODS

Carrying and/or towing loads above the gross combination weight of the trailer and your Motorcycle, as specified by the Manufacturer, or carrying hazardous or inflammable goods in contravention of the Australian Code for the Transport of Dangerous Goods by Road and Rail.

PENALTIES AND FINES

Penalties, fines, punitive, exemplary or aggravated damages.

RECKLESS ACTS

Reckless acts by you, or a person using the Motorcycle with your Express or Implied Consent (such as burnouts, wheelies, donuts or street racing).

SEIZURE OF MOTORCYCLE

Loss or damage caused to your Motorcycle as a consequence of legal seizure or repossession.

SPECIFIC EXCLUSIONS TO THIRD PARTY LIABILITY COVER

We will not provide Third Party Property Damage cover:

- If the damaged property belongs to you or is in your possession, care, custody or control at the time of the accident.
- If the damaged property belongs to a person who resides at the same residential address as you.
- If the Motorcycle was being operated without your permission at the time of the accident.
- For any liability you agree to accept that would not apply if such an agreement did not exist.
- For property belonging to or in the possession or control of a person operating or using the Motorcycle with your permission at the time of the accident, but

we will provide this cover to any other rider using the Motorcycle with your permission, and any passengers on the Motorcycle if the Motorcycle is being used with your permission.

STORAGE COSTS

Any storage charges associated with the Motorcycle, unless approved by us.

TERRITORY LIMITS

Loss, damage or Legal Liability caused or incurred outside Australia except where your Motorcycle is in transit by sea, or air between places within Australia.

TERRORISM

Loss or damage caused by the threat or use of force by any person or group of people for political, religious, ideological or similar purposes to influence any government and/or put any section of the public in fear.

TESTS AND EVENTS USE

Motorcycles used for or tested in preparation for racing, pace making, reliability or similar trials, rally, speed, hill climbing or similar tests, experiments or demonstrations in connection with the motor trade.

THEFT

Where the Motorcycle is stolen and/or damaged:

- As a consequence of your keys being in or on the Motorcycle at the time of the theft or damage. This includes leaving the keys in or on your Motorcycle when parked on private property; or
- By a person known to you unless you report the matter to the Police, and fully co-operate with any resulting Police investigation and/or legal action.

TRAILER CONTENTS

Loss or damage to any contents or fixtures in or on your trailer.

TYRES

Damage to tyres or wheel rims caused by braking, road puncture, cuts or bursting.

UNAUTHORISED REPAIRS

Repairs to the Motorcycle that have been made without our prior consent.

UNDISCLOSED RIDERS

Where the Motorcycle is being used by a rider who is not listed on this insurance, who would not have been accepted as a risk for any reason within our current underwriting criteria.

UNINTENDED USE

Using the Motorcycle in a manner or under conditions which are outside the manufacturer's specifications or recommendations.

UNLICENSED RIDERS

Where the Motorcycle is being ridden (with your express or implied consent) by any person who does not hold an appropriate licence or learners permit authorised to ride a specific type or class of motorcycle under any State or Territory laws.

UNREGISTERED MOTORCYCLES

If the Motorcycle was unregistered for road or recreational use at the time of an accident that results in a claim on this insurance.

UNROADWORTHY CONDITION

If, at the time of the event giving rise to the claim, the Motorcycle was being used in an un-roadworthy or unsafe condition and you knew or ought to reasonably have known of such condition.

WAR

Loss or damage caused by war, foreign hostilities, civil war, rebellion, revolution, insurrection, military or usurped power, riots, labour disturbances or looting, sacking and/or pillage.

WEAR, TEAR AND FAILURE

Loss or damage attributable to deterioration, wear and tear, rust or corrosion, structural, mechanical or electrical failure to any part of your Motorcycle, or for the cost of repairs to the components that failed.

HOW TO MAKE A CLAIM

When making a claim and to assist us in processing it, you must give us the information and assistance we reasonably request, and any information you give us must be honest, correct and complete.

We may need certificates or other documentation to verify your claim, including a completed claim form. Where this is required, we will ask for it. Any costs associated with obtaining further information regarding your claim are payable by you.

Where you fail to provide all assistance required within a timely manner, we may place your claim on hold until such time as all assistance is given, this includes but is not limited to, attending interviews, assisting with recovering from other parties, and providing requested documentation.

IN THE EVENT OF AN ACCIDENT

As soon as possible after an accident:

- Take all reasonable steps to prevent or minimise further injury (if applicable) loss, damage or liability.
- Exchange details with all other parties involved in the accident, including names, addresses, vehicle details, and insurance details.
- Do not admit, deny or negotiate liability with any person.
- Obtain a Police Report within 18 hours if:
 - no other vehicles are involved; or
 - the rider of your Motorcycle leaves the scene of the accident before giving their details to the other driver involved in the accident.
- Make note of the accident details including time, date, location and road conditions.
- If possible, seek witness details to assist to confirm accident details.

FOLLOWING THEFT OR MALICIOUS DAMAGE

As soon as you discover the theft or malicious damage:

- Notify the Police immediately.
- Take all reasonable steps to prevent or minimise further loss or damage (where applicable).
- Make note of the incident details including time, date, and location.
- If possible, seek witness details to assist to confirm the incident.

LODGING YOUR CLAIM

- Contact us on 1800 999 977, or obtain a claim form by visiting www.ericinsurance.com.au.
- Claims should be lodged for consideration within 30 days of the event, with full details of the event including any party who may be responsible. If your claim is lodged after 30 days and doing so impacts our opportunity to accurately assess or investigate your claim, or results in us incurring additional costs, we may reduce your claim settlement by the additional costs.
- Provide us with an opportunity to inspect any loss or damage before repairs are commenced.

WHO REPAIRS THE MOTORCYCLE?

If we accept your claim and the Motorcycle can be repaired, we will arrange to have the Motorcycle repaired by a repairer acceptable to us from our network of recommended and preferred repairers. Where there is more than one repairer conveniently available to repair your Motorcycle, you can choose a repairer from our network. We will only pay for repairs to a licenced repairer authorised by us.

Where you decide to choose a repairer outside our network, we may not authorise repairs. Where repairs are not authorised by us, we will pay you the reasonable cost for the repairs as determined by us considering alternative repair quotations from repairers we choose.

TOTAL LOSS CLAIM

If we consider your Motorcycle to be a Total Loss, we will:

- replace your Motorcycle in accordance with the terms and conditions of your insurance as stated under the heading "Replacement of a new motorcycle", or
- pay you up to the Amount Covered as shown on your Policy Schedule.

We may deduct from your claim settlement:

- the total of any excesses applicable,
- any unpaid premiums (including instalment payments for the remaining Period of Insurance), and
- the amount of any refund you receive from the registration and Compulsory Third Party (CTP) Insurance.

Any salvage of your Motorcycle will become our property and we will retain the proceeds of any salvage sale.

If your Motorcycle is subject to a finance contract, then we will pay the balance owing on the finance contract (up to the Amount Covered less deductions applicable) to the Financier and pay you any balance.

WHAT YOU PAY IN THE EVENT OF A CLAIM

Before we make any payment in relation to a claim on this insurance, you must pay:

PREMIUM

In the event of a Total Loss we will deduct from the amount we pay you any unpaid periodic payments for the remaining Period of Insurance.

EXCESS

The applicable Excess/es. More information can be found under the heading 'Excess' below.

CONTRIBUTION

You may be asked to contribute toward the repair costs if:

- The repairs being performed will restore the Motorcycle to a better condition than that immediately prior to the incident which gives rise to a claim under this insurance; or
- The cost of repairing legal Modifications and/or Non-Standard Accessories that are essential to the operation of the Motorcycle but exceed the amount nominated by you in the Modifications and Non-Standard Accessories Value.

EXCESS

There are 6 types of Excesses:

1. Basic Excess;
2. Inexperienced Rider Excess;
3. Imposed Excess;
4. International Licence Holder Excess;
5. Unlisted Rider Excess; and
6. Theft Excess

The Excess you pay is the total of the applicable Excesses added together. You will not be required to pay an Excess where we determine you are not at fault, and you can provide the name, residential address and contact details of the person(s) we agree is at fault and this person(s) does not reside at the same residential address as you.

BASIC EXCESS

A Basic Excess will apply in the event of a claim and it will be shown on your Policy Schedule under the heading "Excess Details".

INEXPERIENCED RIDER EXCESS

An Inexperienced Rider Excess of \$750 will apply if the rider of the Motorcycle at the time of an accident has been licensed in Australia for less than two years.

(The duration of a learners permit is not considered as a licence for the purpose of experience).

IMPOSED EXCESS

An Imposed Excess may be applied based on the type of Motorcycle and/or the riding record and accident or insurance history of a rider of the Motorcycle and will be shown on your Policy Schedule under the heading "Excess Details". Where the rider of the Motorcycle at the time of an accident was unlisted, we will request documentation to determine if an Imposed Excess would apply.

INTERNATIONAL LICENCE HOLDER EXCESS

An International Licence Holder Excess of \$2,000 will apply if the rider of the Motorcycle at the time of an accident is only authorised to ride on an International Licence.

UNLISTED RIDER EXCESS

An Unlisted Rider Excess of \$750 will apply if the rider of the Motorcycle at the time of an accident is less than 25 years of age and is not listed on your insurance at the time of an accident, and where we would have agreed to include them as a rider based upon our acceptance and eligibility guidelines.

THEFT EXCESS

The theft Excess must be paid in the event that your Motorcycle is stolen. The theft Excess is 10% of the market value (determined by us at time of claim) for your Motorcycle, up to a maximum of \$1,000.

The Theft Excess will not apply if Your Motorcycle is stolen from a securely locked building or was securely fastened with a locking device to an immovable object.

PAYING YOUR EXCESS

How you pay your Excess, if applicable, will depend on the type of claim.

Accident repair claims:

Any applicable Excess will be deducted from the cost of repairs to the Motorcycle and you pay the Excess to the repairer. Where we are unable to authorise repairs and a cash settlement is made in-lieu, we shall deduct the excess from the amount we pay.

A Total Loss claim:

Excess will be deducted from the assessed Total Loss value of the Motorcycle. If we replace the Motorcycle following a Total Loss, you pay the Excess to the dealer when collecting the replacement motorcycle.

Legal Liability claims:

Irrespective of whether there is damage to your Motorcycle, if you have caused damage to another vehicle or property, you will need to pay us any applicable Excess before we make payment for the damage you have caused.

DETERMINING WHAT WE PAY AND OUR RIGHTS

MAXIMUM PAYMENT

We will not pay more than the Amount Covered as stated in the Policy Schedule.

SUBROGATION RIGHTS

We are entitled to take over and conduct in your name and the name of any other person, the defence or settlement of any claim. We are also entitled to prosecute to the extent of the law for our own benefit and in your name, a claim for any indemnity or damages. We shall further have full discretion in the conduct of these proceedings or in the settlement of any claim.

CLAIM RECOVERY

If you make a claim for an incident that we consider was not your fault, we reserve the right to action recovery of any payments made by us, and any such recovery action will be taken in your name.

REPLACEMENT PARTS

If any part necessary for repair of the Motorcycle is not available in Australia, then we will attempt to obtain a part consistent with the age or condition of the Motorcycle. If we are unable to obtain such a part, then we will pay the lesser of:

- The manufacturer's most recent Australian list price for that part;
- The list price of the closest equivalent part available in Australia; or
- The actual cost of having a new part made in Australia.

We will pay for the repair or replacement of a particular damaged item irrespective of whether it forms part of a set. For example, if one wheel rim is damaged and cannot be replaced because it is no longer available, we will only pay for one wheel rim and not a full set of wheel rims.

THE COST OF YOUR INSURANCE COVER

The Premium for your insurance cover will be shown on the Policy Schedule. Some of the key factors that may influence your Premium include, where applicable:

- The type of Motorcycle;
- The age and licence experience of people who will ride the Motorcycle;
- The driving/riding experience of anyone likely to ride your Motorcycle including accidents or claims;
- The location where the Motorcycle is garaged;
- The usage of the Motorcycle;
- Government taxes and/or charges; or
- The method of payment you choose by which to pay the Premium, including payment by instalments.

You are not obliged to finance the payment of the Premium.

PAY YOUR PREMIUM BY INSTALMENTS

You can pay the Premium by instalment payments to help spread your payment over time. If you pay the Premium by instalment payments:

- An Interest Charge will apply which will be separately disclosed on your Policy Schedule, and
- The Total Amount Payable will be more than if you pay the Premium in a single upfront payment.

If you make a claim which results in the termination of your insurance cover, we shall deduct the instalment payments for the remaining Period of Insurance from any claim amount we pay you.

OVERDUE INSTALMENTS

If you are paying the Premium by instalment payments and an instalment payment is overdue, we can do one or both of the following:

- Refuse to pay a claim if the instalment payment is 14 days (or more) overdue;
- Cancel your insurance cover if the instalment payment is 1 month (or more) overdue.

If we cancel your insurance cover because an instalment payment is unpaid, your insurance cover will end on the due date of the unpaid instalment payment.

If you are paying the Premium by instalment payments, please refer to the Direct Debit Request Service Agreement which sets out the terms and conditions applicable to your instalment payment arrangement.

COOLING OFF PERIOD

You can cancel your insurance within 21 days of the date your insurance commences ("cooling off period") by contacting us by phone, email or mail, and unless you have made a claim, we will refund the Premium in full.

You are also entitled to cancel your insurance cover after the cooling off period (refer to the "Cancellation of your insurance" section for full details).

WE RELY ON THE INFORMATION YOU PROVIDE US

When we agree to insure you, to renew or vary your insurance cover or decide on your claim, our decision relies on the accuracy of the information you give us. If that information is not accurate, we may reduce or deny a claim made by you or anyone else insured by this insurance, or cancel this insurance.

We never want to have to do that, so you must answer honestly, completely and correctly the questions we ask about you, your Finance Contract, the Motorcycle, your claim or any events that may result in a claim on your insurance.

We don't require You to comply with the general duty of disclosure. We do require You to be truthful, honest and accurate whenever we interact with You in relation to this insurance. You must also inform us immediately if any of the following circumstances apply to You:

- There is a change in your personal details;
- There are changes to the Motorcycle or Motorcycle use; or
- You are no longer the registered owner of the Motorcycle.

HOW WE PROTECT YOUR PERSONAL INFORMATION

Eric are committed to ensuring that your personal information is protected. We collect, store and use your personal information (including sensitive information) for the purpose of providing you with insurance, administering your insurance policy including assessing and paying claims as required. Where it is possible for us to do so, we will collect personal information directly from you or through our distributors at point of sale of your insurance.

We may also use your personal information to inform you about other insurance products or services which may benefit you, perform administrative functions such as training and development of employees, manage complaints and disputes, and to comply with our legal obligations.

Further information on how we use your personal information is set out in our Privacy Policy that is available on our web site www.ericinsurance.com.au/privacy-policy.

CODE OF PRACTICE

The Insurance Council of Australia (ICA) has developed a voluntary General Insurance Code of Practice (the Code) to which we are a signatory. This Code aims to raise the standards of practice and service within the general insurance industry.

The objectives of this Code are:

- To commit us to high standards of service;
- To promote better, more informed relations between us and you;
- To maintain and promote trust and confidence in the general insurance industry;
- To provide fair and effective mechanisms for the resolution of complaints and disputes between us and you; and
- To promote continuous improvement of the general insurance industry through education and training.

To obtain a copy of the Code visit www.codeofpractice.com.au or contact us.

CANCELLATION

CANCELLATION BY YOU

You may cancel your insurance at any time by contacting us by phone, email or mail. If you cancel your insurance, your cover will end on the date we receive your cancellation request, unless you inform us otherwise and we agree.

CANCELLATION BY US

We may cancel this insurance when it is permitted by law such as if you:

- Made a misrepresentation to us before entering into this insurance;
- Fail to comply with the duty of utmost good faith;
- Fail to comply with a provision of this insurance (including the obligation to pay the Premium on time); or
- Make a fraudulent claim under this insurance policy or any other insurance policy.

UPON CANCELLATION

If your insurance cover is cancelled either by you or us (except in the case of fraud) outside your cooling off period, we will refund any Premium you have paid for the period after the cancellation date, less:

- Any non-refundable taxes and charges; and
- Our cancellation fee of \$50.

If we have cancelled your insurance cover due to fraud, we will not pay any refund.

- If the refund amount is less than the cancellation fee and other charges, a refund will not be issued and we will not charge you an additional amount to cover the difference.

Where the Premium has been financed, you authorise us to pay any refund direct to the Financier unless the Financier otherwise authorises the refund to be paid direct to you.

TERMINATION

This insurance cover will terminate and no Premium refund is payable if:

- The Period of Insurance expires; or
- We have paid all amounts we are obliged to pay under this insurance including where the Motorcycle is assessed by us to be a Total Loss.

DISPUTE RESOLUTION

Eric is committed to providing a great range of products and services to our customers. Eric is a signatory to the General Insurance Code of Practice and follows the Complaints process outlined in the Code. Please talk to us using the details set out below if at any time we have not satisfied your expectations. Most times we will be able to resolve your concerns upon initial contact.

Post: PO Box 9106, Scoresby VIC 3179
Phone: 1800 999 977
Web: www.ericinsurance.com.au
Email: info@ericinsurance.com.au

If we are unable to resolve your concern, please ask to speak to our Customer Resolution Leader (CRL) who will register your complaint and conduct an initial review of the matter and provide a recommendation to you.

If at this point the CRL recommendation has not resolved your complaint to your satisfaction, you may wish to request a final internal review by Eric's Internal Dispute Resolution (IDR) Committee. Our dispute resolution procedure is free of charge to you.

A dispute can be referred to the Australian Financial Complaints Authority (AFCA). It provides a free and independent dispute resolution service for consumers who have general insurance disputes falling within its terms. Their contact details are:

Phone: 1800 931 768
Post: GPO Box 3, Melbourne, Victoria 3001
Web: www.afca.org.au

FINANCIAL CLAIMS SCHEME

This insurance cover may be a 'protected policy' under the Federal Government's Financial Claims Scheme (FCS), administered by the Australian Prudential Regulation Authority (APRA). The FCS applies in the unlikely event of insurer insolvency if the Federal Treasurer declares that the FCS will apply to the insolvent insurer.

The FCS entitles certain persons, who have valid claims connected with certain protected policies issued by that insurer to be paid certain amounts by APRA. Information about the FCS can be obtained from APRA at www.fcs.gov.au or by calling 1300 55 88 49.

GST

Any claim payments we make will be based on GST inclusive costs. If you are entitled to claim an input tax credit for any claim paid under this insurance, we will reduce the claim payment by the amount of such input tax credit.

If you are registered for GST, you must advise us of your correct input tax credit percentage. You are liable for any GST liability we incur arising from your incorrect advice or failure to advise us of your GST situation.

WHAT DO WE MEAN BY THAT?

Certain words used in this document have special meanings. These words and their meanings are listed below:

Amount Covered: The maximum amount we will pay for any claim on your Motorcycle including the amount nominated by you as the Modifications and Non-Standard Accessories Value, and as shown on the Policy Schedule.

Endorsement: An additional term or condition applied by us or an alteration requested by you and agreed to by us. An Endorsement may be sent as a separate document or may be stated on the Policy Schedule.

Excess: The contribution to the claim cost which you may be required to pay in the event of a claim. Any Excess will be shown in this PDS and/or your Policy Schedule. The Excess you may pay is the total of the applicable Excesses added together.

Express or Implied Consent: Where you provide permission for a person to use the Motorcycle either by verbal agreement or by providing them with access to it.

Financier: The finance company or credit institution named in the Policy Schedule with whom you have entered into a Finance Contract in relation to your Motorcycle.

Insurance Charge: The amount you pay for this insurance cover prior to any compulsory Government charges such as Stamp Duty, GST and levies if applicable.

Interest Charge: The additional charge payable by you if you choose to pay the Premium by instalments. This amount is a separate charge and does not form part of the Premium you pay for this insurance cover.

International Licence: Any licence to operate a motorcycle not issued by a State or Territory of the Commonwealth of Australia.

Legal Liability: The legal responsibility to pay compensation for damage to property, other than your own, as a result of an accident involving your Motorcycle for which you or the rider of your Motorcycle is at fault.

Modifications and Non-Standard Accessories Value: The amount nominated by you for the total combined value of all legal Modifications and Non-Standard Accessories to your Motorcycle, and is the maximum amount we will pay for the repair or replacement of these items. This value will be shown on your Policy Schedule.

Modifications: Alterations to the Motorcycle's standard body, engine, suspension, wheels, tyres or paintwork which may alter the value, safety, performance or appearance of the Motorcycle.

Motorcycle: The Motorcycle or All Terrain Motorcycle (ATV) registered for road or recreational use, including any Modifications or Non-Standard Accessories described on the Policy Schedule.

Motorcycle Apparel: Clothing and protective safety items which are purposely made for motorcycle riding and are worn by you. This includes jackets, pants, riding boots, gloves and helmets.

Non-Standard Accessories: Any items fitted to the Motorcycle which were not part of the manufacturer's standard specification for the Motorcycle.

Period of Insurance: The period during which cover is provided under this insurance as shown on the Policy Schedule. The Period of Insurance begins on the commencement date and ends on the expiry date, as stated on the Policy Schedule, unless this insurance cover ends earlier in accordance with its terms.

Policy Schedule: The most recent document we provide to you describing the terms and conditions specific to your insurance cover which includes your details, the Motorcycle details, the policy number together with the details of cover, Premium, additional Interest Charges (if applicable) and other policy details. This document also provides you with confirmation of your transaction.

Premium: The amount you pay for this insurance cover including amounts payable by us in relation to any compulsory Government charges such as Stamp Duty, GST and levies if applicable. This amount does not include the additional Interest Charge payable by you if you choose to pay your Premium by instalments.

Total Amount Payable: Your Premium and Interest Charges payable (if applicable) shown on your Policy Schedule.

Total Loss: If the damage sustained to your Motorcycle in our opinion renders the Motorcycle unsafe or uneconomical for us to repair when compared to the Amount Covered as shown on the Policy Schedule, or when your Motorcycle has been stolen and not recovered.

Unlisted Rider: Any person who has your Express or Implied Consent to be in control of the Motorcycle and is not nominated on this insurance prior to the occurrence of an event leading to a claim.

We, us, and our: The issuer and insurer of the policy, Eric Insurance Limited ABN 18 009 129 793 AFSL 238 279

You and your: The insured person(s) named in the Policy Schedule, who must also be the registered owner of the Motorcycle, or any person who has your Express or Implied Consent to be in control of the Motorcycle. It also includes the Financier if the Motorcycle is subject to a finance contract only to the extent of their interest in the Motorcycle.



ericinsurance.com.au
1800 999 977

PO Box 9106
Scoresby Victoria 3179
ABN 18 009 129 793 AFS Licence No: 238279

Part B FINANCIAL SERVICES GUIDE

About this Financial Services Guide

This Financial Services Guide (FSG) is designed to assist you in deciding whether to use the financial services we provide. It explains the kinds of financial services we offer. It also contains general information about who we are, how we and other persons or organisations are paid in relation to the services and how to make a complaint.

The Product Disclosure Statement (PDS) (Part A of this document) contains information on the benefits and significant characteristics of this Eric insurance product and of the rights, terms and conditions attaching to the policy. It is aimed at assisting you to compare insurance products so that you can make an informed choice about whether to acquire the product.

This FSG was prepared on 1st Dec 2016

Distribution of this FSG has been authorised by Eric.

Your questions	Our Answers
Who is Eric?	<p>Full details about Eric, including its contact details, ABN and AFSL number, are given in the PDS (Part A of this document).</p> <p>Eric is an Australian Financial Services Licensee which is authorised to deal in and provide general advice in relation to general and life insurance (limited to life consumer credit insurance) products.</p> <p>Eric specialises in the offering of motor trade related insurances for wholesale and retail clients. Depending on the scope of their authorisation, Eric's authorised representatives can assist you with:</p> <ul style="list-style-type: none">Consumer Credit Insurance (CCI)CCI (business purpose)Gap Cover InsuranceMotor Vehicle InsuranceExtended Warranties InsuranceSuch other general insurance products as authorised by Eric from time to time
Who are we?	<p>Our contact details including ABN and AR number is set out on the last page of this document.</p> <p>Referred to in this FSG as "we", "us" or "our".</p>
Who is the Administrator?	<p>This Eric insurance product is administered on behalf of Eric by the Third Party Introducer (TPI) whose name and contact details are set out on the last page of this document.</p> <p>Eric has an arrangement with the TPI to provide certain non-financial services on its behalf in relation to this Eric insurance product.</p> <p>The TPI is not responsible for this Combined Product Disclosure Statement and Financial Services Guide and does not provide any financial product advice on this Eric insurance.</p> <p>The name and contact details of the TPI are set out on the last page of this document.</p>
What remuneration is payable in relation to the financial services we provide?	<p>Eric and its employees</p> <p>Eric receives the premium you agree to pay for the product which may include amounts in relation to stamp duty, GST, fire services levy and/or other government charges, taxes, fees or levies (where relevant).</p> <p>Eric employees receive a salary from Eric and may receive bonuses and incentives.</p> <p>Third Party Introducer (TPI), Authorised Representative(s) and other parties they contract with (and their employees)</p> <p>Eric retains an agreed amount of the premium dependent on factors such as the type of product and coverage and the relevant TPI's services and retains the amount of premium received in relation to relevant taxes, charges and levies. The TPI receives the difference between that amount and the premium paid. Authorised representatives as well as other parties that contract with the TPI to undertake some or all of the TPI's duties (where relevant) may receive a share of the amount that the TPI receives from Eric, in the form of an agreed commission and/or fee between the TPI and the Authorised Representative and/or other party (as relevant).</p>

	<p>Employees of the TPI and/or the Authorised Representative(s) (including directors and subcontractors) may be paid a salary for their services and may also receive bonuses based on the volume of sales of all financial products over a period and may participate in profit sharing arrangements, business related conferences, study trips or other functions. The TPI and/or Authorised Representatives may share or pass on a proportion of any additional remuneration or other benefits they receive to their authorised staff.</p> <p>Where a third party has referred you to the TPI, Authorised Representative or another party they contract with, that party may share with them a part of the amount it earns.</p> <p>All of the above remuneration is taken from the premium paid by you. This remuneration may also be received on premium paid when you renew or vary your insurance.</p> <p>If you would like more information about the remuneration that we or other entities receive in relation to the above services, please ask us. The request should be made within a reasonable time after this FSG is provided to you and before we provide you with a financial service to which this FSG relates.</p>
What are the changes to the Emergency Services levy in NSW?	<p>Emergency Services Levy explained for our customers in New South Wales</p> <p>From 1 July 2017 you will no longer pay for the Emergency Services Levy as part of your insurance premium. This fee will be replaced by the Emergency Services Property Levy. Eric Insurance will continue to collect the ESL until this date to ensure we meet our obligations to the New South Wales government.</p> <p>After 1 July 2017 Eric's policies will no longer include the Emergency Services Levy. Please see www.ericinsurance.com.au/support.</p>
What happens if you have a complaint or dispute?	We will do our best to work with you to resolve any complaints you may have in relation to the financial services provided by us. For information on how your complaint can be resolved please see the 'Dispute Resolution' section of the PDS (Part A of this document).
What compensation arrangements apply?	Please see the Compensation Arrangements and Financial Claims Scheme section of the PDS (Part A of this document) for information on Eric's compensation arrangements.
How is my personal information dealt with?	We are committed to ensuring the privacy and security of your personal information. We adhere to the Privacy terms set out in the "Privacy" section of the PDS (Part A of this document).
Where can you find further information?	If you require further information or would like to give us instructions you can contact us on the number provided on the last page of this document.

Eric Authorised Representative details	Third Party Introducer details
<p>Team Moto Digital ABN: 15634175914 Authorised Representative No:001265078 Address: 68 Moss Street, SLACKS CREEK, Queensland 4127 Phone: 07 3380 2222 Fax: Email: mike@mcholdings.com.au Our Office Hours Are: 9.00am to 5.00pm Monday to Friday Trading as: Team Moto Digital</p>	<p>Eric Digital ABN: Address: 35 Dalmore Drive, Scoresby, Victoria 3179 Phone: Fax: Email: Our Office Hours Are: 9.00am to 5.00pm Monday to Friday Trading as: Eric Digital</p>